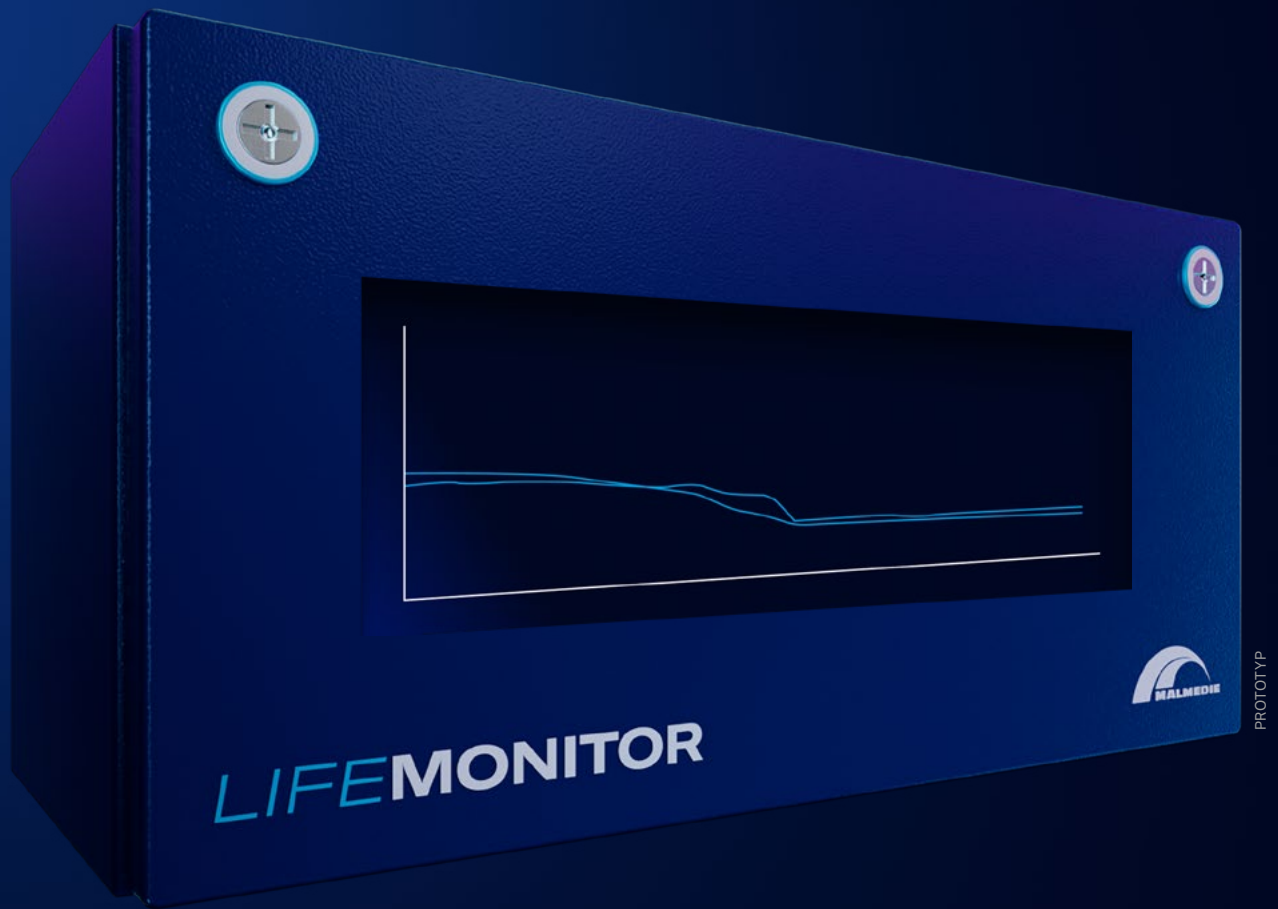


SAFETY BEGINS WITH KNOWLEDGE.



The future of wear monitoring for large industrial couplings is here – with LifeMonitor by Malmedie.

With a wear monitoring precision of up to 0.1 mm, the LifeMonitor sets new standards for drum couplings.

This innovative method uses a speed sensor to measure and analyze the tangential displacement between the hub and housing. It delivers precise results, detects wear at an early stage, and supports maintenance planning.

Take the first step towards future-proof digitalization in crane operations today!

- ✓ Reduces downtime
- ✓ Increases planning reliability
- ✓ Optimized coupling service life
- ✓ Ideal for demanding applications with up to 8 sensors
- ✓ Numerous integration options into existing IT and data infrastructure

SCHEDULE A CONSULTATION NOW!

NEXT LEVEL DRIVETRAIN SYSTEMS
www.malmedie.com



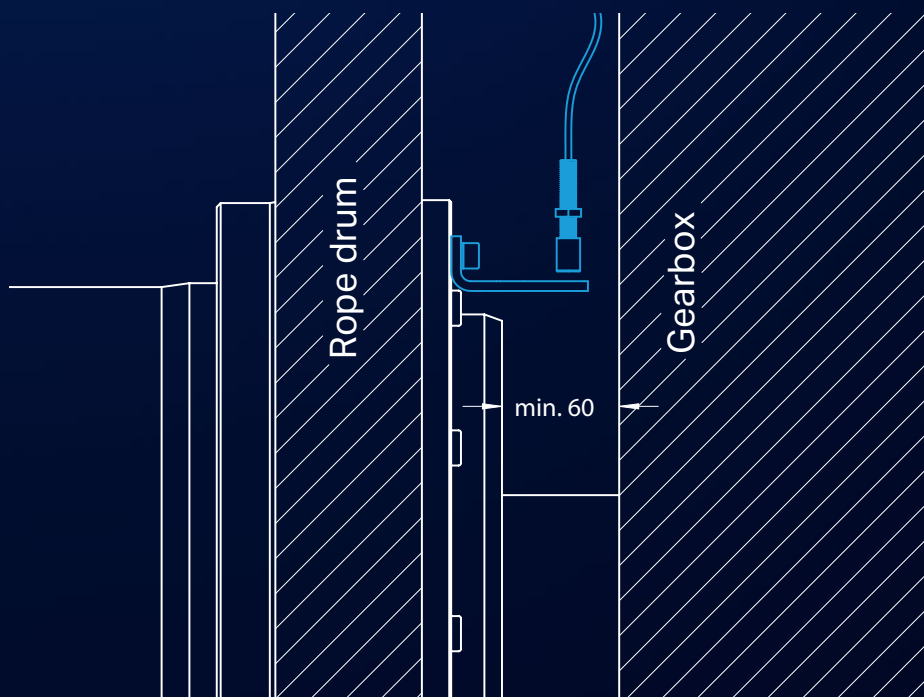
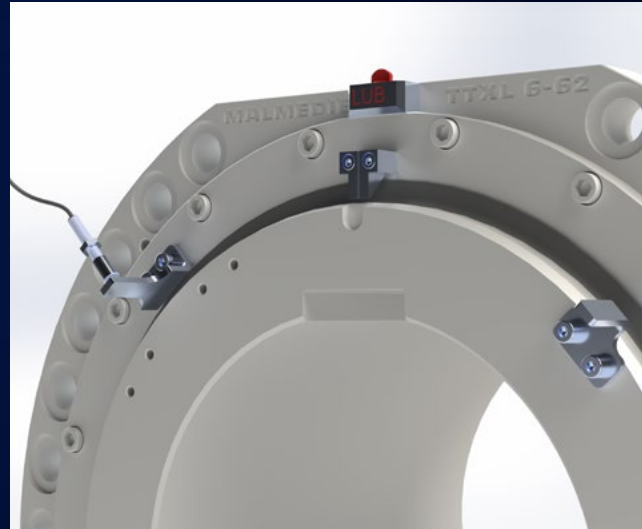
SIMPLE AND FLEXIBLE INTEGRATION

The LifeMonitor offers various integration options into existing IT and data infrastructures via analog and digital outputs.

Among the possible outputs:

- ✓ 4–20 mA interface for wear value output
- ✓ Digital switch contact for alarm signaling
- ✓ Profibus or Profinet control for wear value output and separate alarm signaling
- ✓ Data interface for information transmission
- ✓ Automatic email alert in case of an alarm

The LifeMonitor is available for TTXL sizes 6–62.
Control box dimensions: approx. 400 × 200 × 155 mm.



PRODUCT DETAILS

Article No. V700401:
LifeMonitor Base Module
(for monitoring a drum coupling)

Includes:

- Peak Analyzer
- Measuring Item
- Speed Sensor

Minimum clearance between
gearbox and hub: 60 mm.